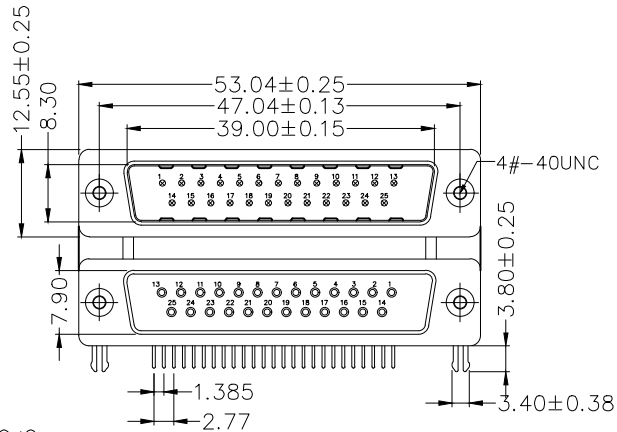
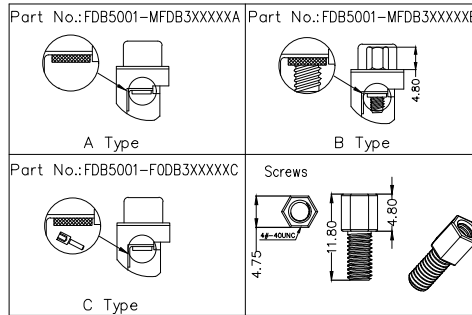


REV	LOCATIONS	DESCRIPTION	DATE	REVISER	APPD



Products Categories: A.B.C



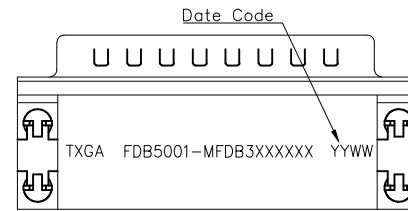
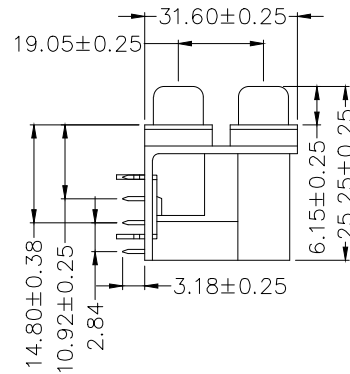
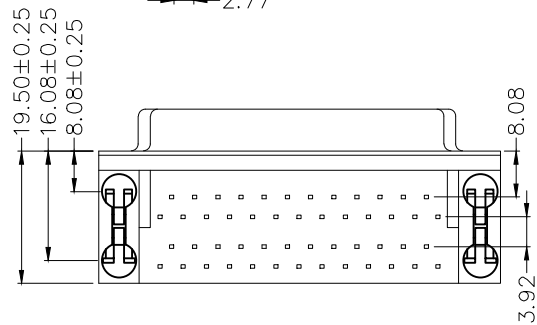
**SPECIFICATIONS**

**Electrical**

Current Rating: 3A AC(rms)/DC  
 Voltage Rating: 250V AC(rms)/DC  
 Contact Resistance: 25 mΩ Max  
 Insulation Resistance: 1000 MΩ Min  
 Withstanding Voltage: 500V AC r.m.s  
 Temperature Range—Operating: -55°C~+105°C

**Material and plating**

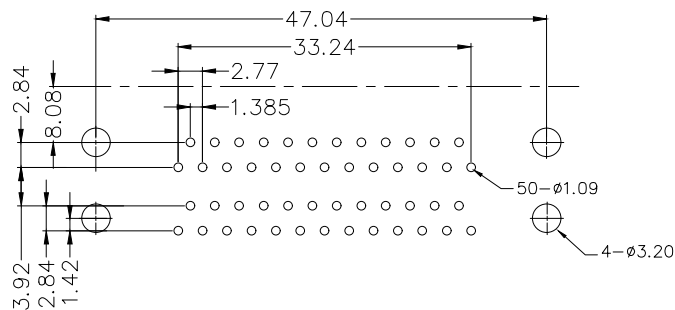
Housing: PBT UL 94V-0  
 Contact: Copper Alloy/ Selective gold on contact area, bright tin on tail  
 Shell: SPCC/ Nickel Plated  
 Bracket: Zinc Alloy/ Nickel Plated  
 Board lock: Copper Alloy/ Tin Plated  
 Screw: Copper Alloy/ Tin Plated



**Ordering Information**

FDB 50 01 - MF D B 3 XX XX X X  
 1 2 3 4 5 6 7 8 9 10 11

1 Category FDB- D-SUB	2 Circuits 50	3 Distinction No. 01	4 Type MF- Male+Female	5 Assembly Layout D-DIP	6 Entry Angle B-90° Angle
7 Plating 3-Selective gold plated on contact area and bright tin plated on tails area	8 Thickness of plating 00-Gold Flash 03-3u' Custom Plate Available	9 Color-Resin K6-Black U1-Blue	10 Packaging K-Tray	11 Distinction Type A-A Type B-B Type C-C Type	



Recommended P.C.Board Layout

THIRD ANGLE PROJECTION	GENERAL TOLERANCES (UNLESS SPECIFIED)		APPROVE BY LEO	DATE 02/AUG/23	PART NO. FDB5001-MFDB3XXXXXX	ITEM NO. FDB5001	
	X. ±0.30	X.* ±5'	CHECKED BY GISELLE	DATE 02/AUG/23	TITLE D-SUB 25PIN MALE+25PIN FEMALE CONN		
DESIGN UNITS METRIC	X.X ±0.20	X.X' ±2'	DRAWN BY NICK	DATE 02/AUG/23	THIS DRAWING CONTAINS INFORMATION THAT IS PROPRIETARY TO TXGA INDUSTRIAL ELECTRONICS(S.Z)CO.,LTD AND SHOULD NOT BE USED WITHOUT WRITTEN PERMISSION		REV 0 SHEET NO. 1/1
SCALE 5:1	SIZE A4	X.XX ±0.15	X.XX' ±1'	X.XXX ±0.10	X.XXX' ±0.5'		